

# **Diversion, Education, Enforcement and Reporting Programs**

**February 23, 2023  
Board of Directors Meeting**

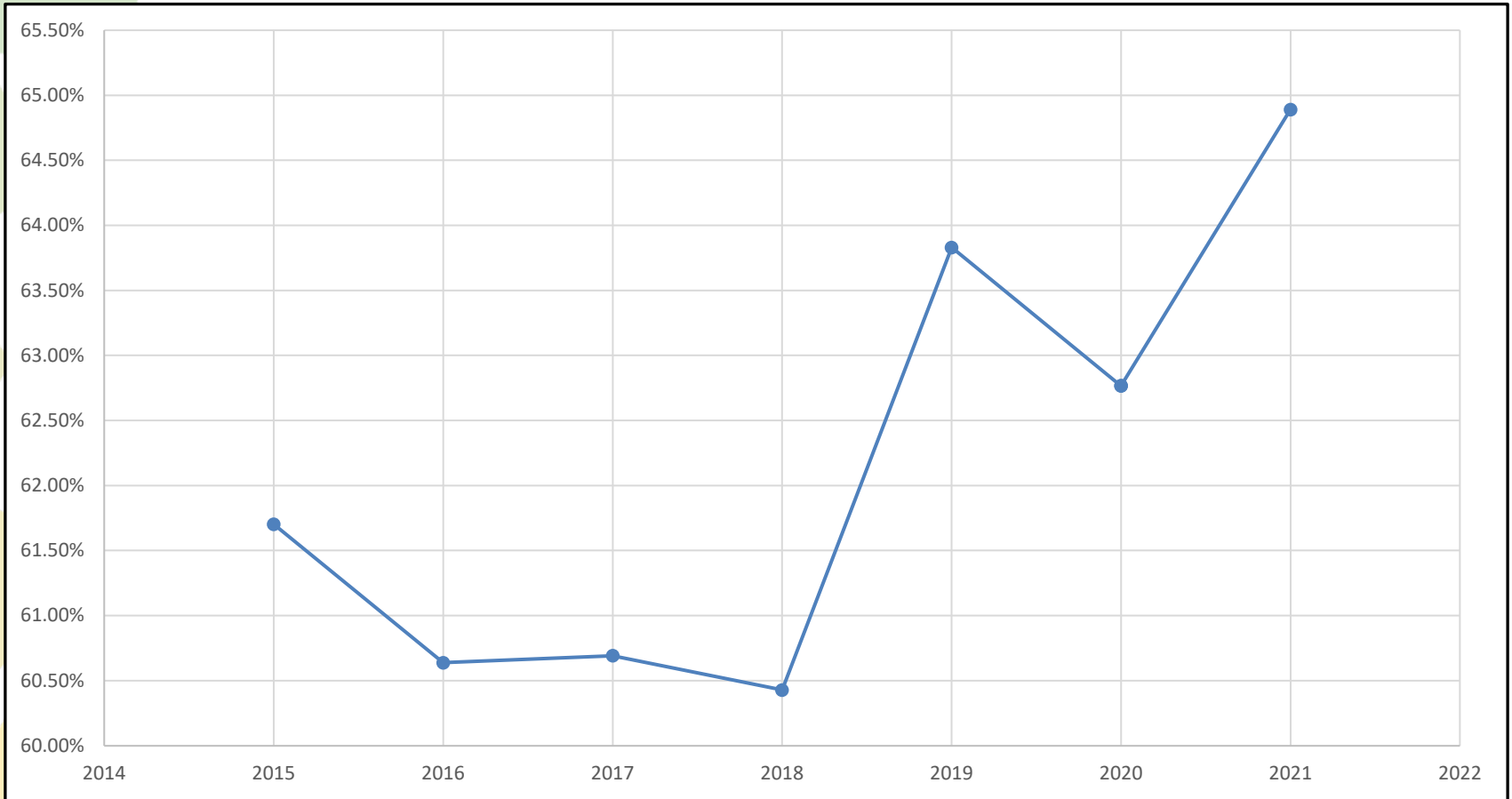


# CalRecycle Diversion Data for 2021

- Electronic Annual Report
- Per capita disposal in 2021 was 3.3 lbs./day
- Diversion rate equivalent is 65%



# Diversion Equivalent Trend



# By Sector Disposal & Diversion 2022

	Single-Family	Multi-Family	Commercial	C&D	Total
Disposed	43,337	10,226	27,364	2,663	83,590
Diverted	89,368	4,831	17,212	11,407	122,818
Generated	132,705	15,057	44,576	14,070	206,408
Percent	67%	32%	39%	81%	60%



# Construction & Demolition

## Debris Diversion



- Integrated into Member Agency building permitting process
- RecycleSmart pays for Green Halo Waste Management Plan tracking software
- Up to 25% of CA waste stream
- Deconstruction



# **SB 1383**

## **Short-Lived Climate Pollutant Reduction Strategy “Keep Organics Out of Landfills”**

- Reduce organic waste disposal 50% by 2020 and 75% by 2025.
- Rescue for people to eat at least 20% of currently disposed surplus food by 2025.
  - ✓ Organics, Recycling and Landfill Service
  - ✓ Food Recovery
  - ✓ Procurement
  - ✓ Outreach and Education
  - ✓ Compliance & Enforcement
  - ✓ Capacity planning
  - ✓ Record Keeping and Reporting
  - ✓ Ordinance



# SB 1383 Member Agency Responsibilities

Monthly Member  
Agency Liaison  
Meeting

## Procurement



Recycled paper,  
mulch & compost +  
related record  
keeping

## CalGreen



Recovery of organic  
waste from mixed  
C&D + adequate  
space for containers  
in commercial  
buildings

## Water Efficient Landscape Ordinance

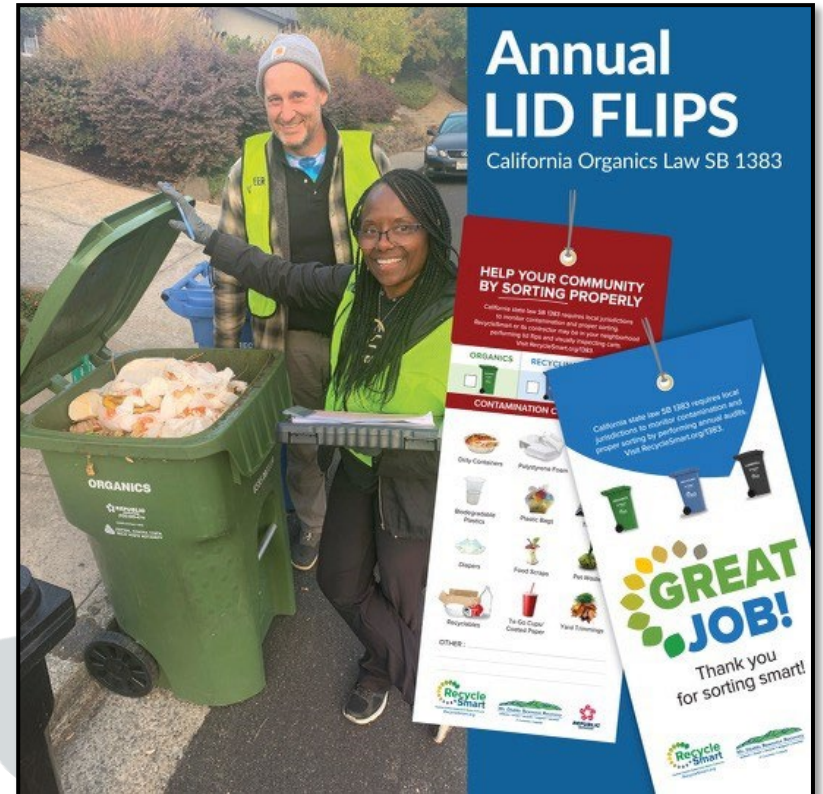


Adopt a WELO or  
enforce state  
model



# SB 1383 Enforcement Protocol

- Enforcement Planning
- Waivers
- Annual Route Reviews
- Desktop Review
- Tracking & Reporting





# Edible Food Recovery

- Maintain required Tier 1 (2022) and Tier 2 (2024) generator lists:
  - Tier 1: Supermarkets and grocery stores, food service providers and distributors, wholesale food vendors.
  - Tier 2: Large restaurants, hotels, health facilities, large venues and events, Local Education Agencies.
- Outreach and education
- Enforcement
  - Agreement with Contra Costa Health Services for Tier 1 inspections.



## Food Donation

For Contra Costa County Businesses

### Help Your Business Help the Hungry

Donating Your Food is Easy!

Every year, Contra Costa grocery stores, restaurants, and other food generating businesses discard tons of edible food. Businesses can now redirect that food to the plates of hungry families.

Food donation is a safe, simple practice with meaningful benefits for local businesses and our community—helping reduce food waste while helping feed our county's food insecure residents.

Working with Food Recovery Organizations, businesses can easily donate food to local non-profit organizations.

### Why Donate food?

- Support your community
- Reduce waste
- Save money

### It's the Law!

California state law Senate Bill (SB) 1383 and RecycleSmart Ordinance 21-1 mandates that by 2025 at least 20% of the edible food that is currently disposed must be recovered and donated for human consumption.

#### Who has to comply:

- **January 1, 2022:** Tier One Generators (supermarkets, grocery stores, etc.)
- **January 1, 2024:** Tier Two Generators (large restaurants, hotels, Local Education Agencies, etc.)

Starting January 1, 2024, penalties can be issued for non-compliance.



**RecycleSmart**  
Central Contra Costa Solid Waste Authority  
RecycleSmart.org

# Schools Education & Diversion Program

## 66 Public and Private K-12 Schools

- Training, education and supplies to support proper sorting
- Assemblies
- WasteBusters Awards
- Internship Program
- Student Scholarships
- Edible food recovery
- Reusables



# Reuse & Cleanup Days

## Single Family Homes

31,933

Reuse setouts in 2022

### REUSE IN ACTION

The Items you put out on Reuse Day help...



**FACT ON REUSE:**  
CCCSWA picked up over 1,500 tons of reusable materials in 2013. Please help us increase that number!

### The Recycle Smart REUSE DAY PROGRAM: Material Goes to Charities!

#### What is a 'Reuse Day'?

The Reuse Day is a partnership between the Central Contra Costa Solid Waste Authority, Mt. Diablo Recycling and Republic Services.

Mt. Diablo Recycling picks up items that are reusable, at the curb. The items are then distributed to those in need or sold in thrift stores.

#### What do I need to do?

- Place reusable items at the curb by 6 a.m. on your Reuse Day (please see the cover for details on your Reuse Collection Day).
- Bag or box small items.
- Please make sure items are dry (items not taken for reuse will be logged and left at the curb for your Clean-up Day).

#### Where do the items go?

Most items go to a variety of charities and non-profits in the local communities.



### REUSE DAY: Items

#### Acceptable Items for Collection

- Household Electronics & Appliances
- Gardening, Outdoor, Sporting Equipment
- Furniture
- Home Decor & Accessories
- Clothes & Shoes
- Office & School Supplies



Please visit our website for a more detailed list.  
[www.WasteDiversion.org](http://www.WasteDiversion.org)

#### What Items are NOT acceptable on my Reuse Day?

##### Please NO:

- Mattresses
- Construction or Demolition
- Tires
- Household Hazardous Waste
- Rocks or Dirt
- Cribs or Car Seats
- Loose Wood
- Please NO Broken Items
- Batteries
- Liquids



### The Recycle Smart CLEAN-UP DAY PROGRAM: Material Goes to Landfill

#### What is a 'Clean-Up Day'?

The Clean-Up Day is when Republic Services picks up any items that are not reusable or recyclable and takes them to the landfill. It is the day AFTER your reuse day.

#### What do I need to do on Clean-Up Day?

- Place items on the curb by 6 a.m. on your clean-up day (please see the cover for details on your Clean-Up Day Collection).
- Cut & tie branches or wood so bundles are 4 feet or less in length and 24 inches in diameter.
- Maximum clean-up volume is 2 cubic yards or fourteen 32-gallon bags.
- Items that are broken are usually not reusable. Please place them on your clean-up pile.

#### What Items are NOT acceptable?

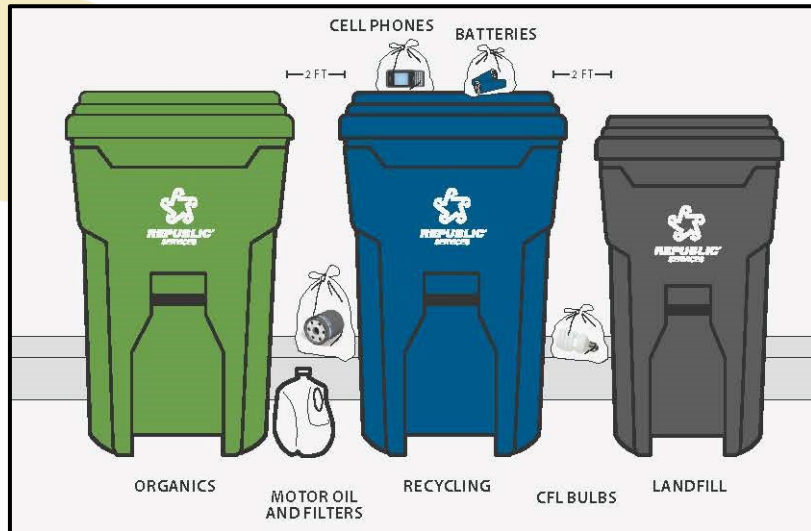
- Household Hazardous Waste
- Electronic Waste
- Recyclables

(List to come)



# Special Materials Handling

- CA Product Stewardship
  - Home-generated sharps
  - Batteries
- 50 tons of batteries in 2022
  - Curbside
  - Reuse Days
  - Retail drop-off



# Home Composting Outreach

- 2016 US Composting Council National Program of the Year Award
- 176 workshops since 2009 with over 7,000 participants
- Vermicomposting & Bin Building workshops starting in 2012
- Virtual workshops
- CompostSMART
- Certification (Republic bill reduction)
- Compost Giveaways



# Outreach and Education

EVERYDAY RECYCLING MADE EASY

## RecycleSmart

SPRING 2021

### What's the takeaway on take-out?

During the pandemic, we've supported local restaurants by ordering lots of food to go. "Date night out" became "date night in" as our favorite eateries prepared meals for us to enjoy at home.

Helping these businesses survive and thrive is a great way to keep our communities strong. But what should we do with all the extra take-out packaging we've collected? And is there any way to reduce the clutter we don't need as we move into a summer of takeout picnics?

Take heart, take-out fans! This issue gives you all the tips you need to solve your carryout conundrums. Check inside for a full menu of what goes where—from plastic clamshells to compostable containers, we've got you covered.

Here are a few tips:

- Don't take stuff you don't need. Eating at home? Ask the restaurant not to include plastic utensils or plates with your order.
- Be an advocate for change. Encourage your favorite spots to shift to paper-based compostable containers, if they haven't already.

"Picnics are a great way to ketchup with friends!"

READER SURVEY

What do you like most about the RecycleSmart newsletter? Are we providing useful information about recycling, composting and reducing landfill waste? How can we answer more of your questions?

Let us know at [RecycleSmart.org/survey](https://www.RecycleSmart.org/survey)

## WE DON'T TRASH FOOD

### Throw Your Food Scraps in the Green Cart

[RecycleSmart.org](https://www.RecycleSmart.org)

No pet waste in the green cart; place in the black cart.

### IT'S OK TO BRING YOUR OWN REUSABLES.

CALIFORNIA LAW ALLOWS IT.

[RecycleSmart.org](https://www.RecycleSmart.org)

### SINGLE USE ITEMS AVAILABLE UPON REQUEST.

IT'S THE LAW IN CALIFORNIA.

[RecycleSmart.org](https://www.RecycleSmart.org)

# RecycleSmart.org

# Community Events



# Diversion Goals & Measurement

- Mature Program in place, a statewide model
- How to get more diversion?
- Statewide diversion goal
- Other agencies' diversion goals
- Rethink our agency's diversion goal?
- Program Metrics